

# FITMENT INSTRUCTIONS

**Alu-Cab™**



## 270 SHADOW AWNING TO THOR ROOF CONVERSION

All rights reserved. No part of this document may be reproduced, translated, stored in a retrieval system, or transmitted, in any form or by any means, electronic, mechanical, photocopying, recording or otherwise, without prior written permission of the owner.

Review all instructions information carefully before installation.

Any damages, direct or incidental to the installer and/or property due to incorrect installation of any parts are the responsibility of the installer. Due to the various applications and fitment options available, the responsibility lies with the user to ensure all mounting points are secure and tight before every trip. If unsure, consult with your Distributor regarding the operations of our products.

Users are advised to be mindful of the load they are carrying and drive in accordance with road conditions.

**DISCLAIMER**

**Alu-Cab**

### 1.1. Tools & Items Required:

TOOLS
Ratchet
13mm Ring Spanner
5mm Allen Key
Drill
Drill Bit Ø8.5mm

### 1.2. Fasteners supplied: (Included with Mounting Kit)

ITEM	QTY
M8 FLAT WASHER	14
M8 OVERSIZED WASHER	4
M8 PLASTIC NUT CAP	14
M8 NYLOCK NUT	14
M8X30 B/HD BOLT S/S	4
M8X20 HEX HEAD BOLT S/S	10

### 1.3. Hardware Required: (Included with Mounting Kit)

Nr	ITEM	DESCRIPTION	QTY
1	441-AWN-THR-FNT-BRKT-01	AWNING TO THOR FRONT MOUNTING BRACKET	1
2	441-AWN-THR-RER-LHS-BRKT-01	AWNING TO THOR REAR LHS MOUNTING BRACKET	1

\*NOTE\* The Shadow Awning is sold separately and is not included in this mounting kit.

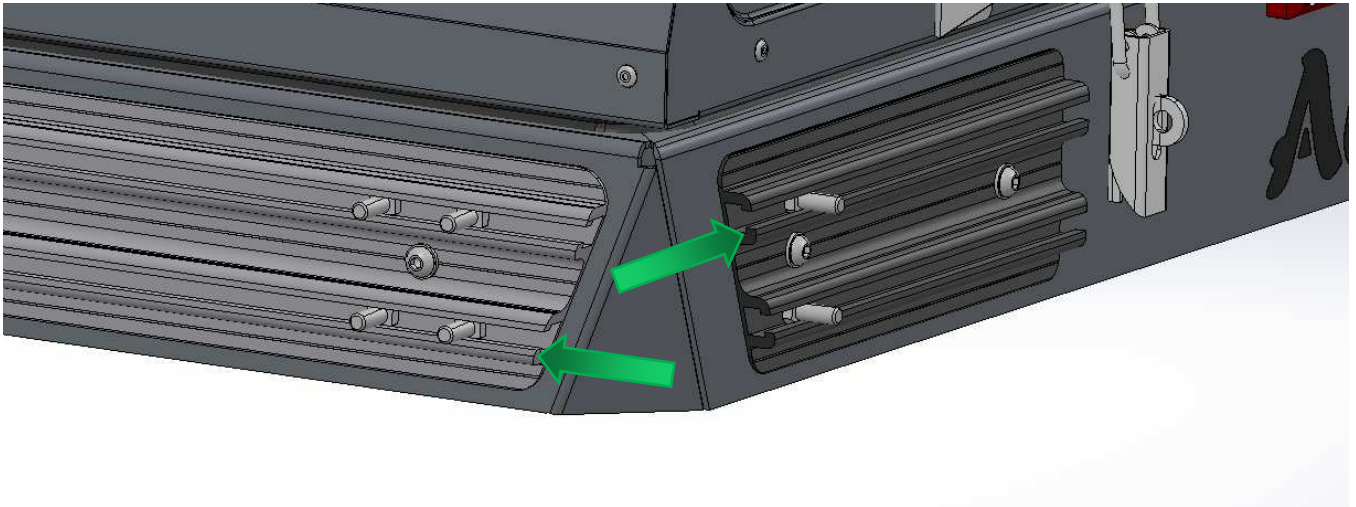


#### **WARNING**

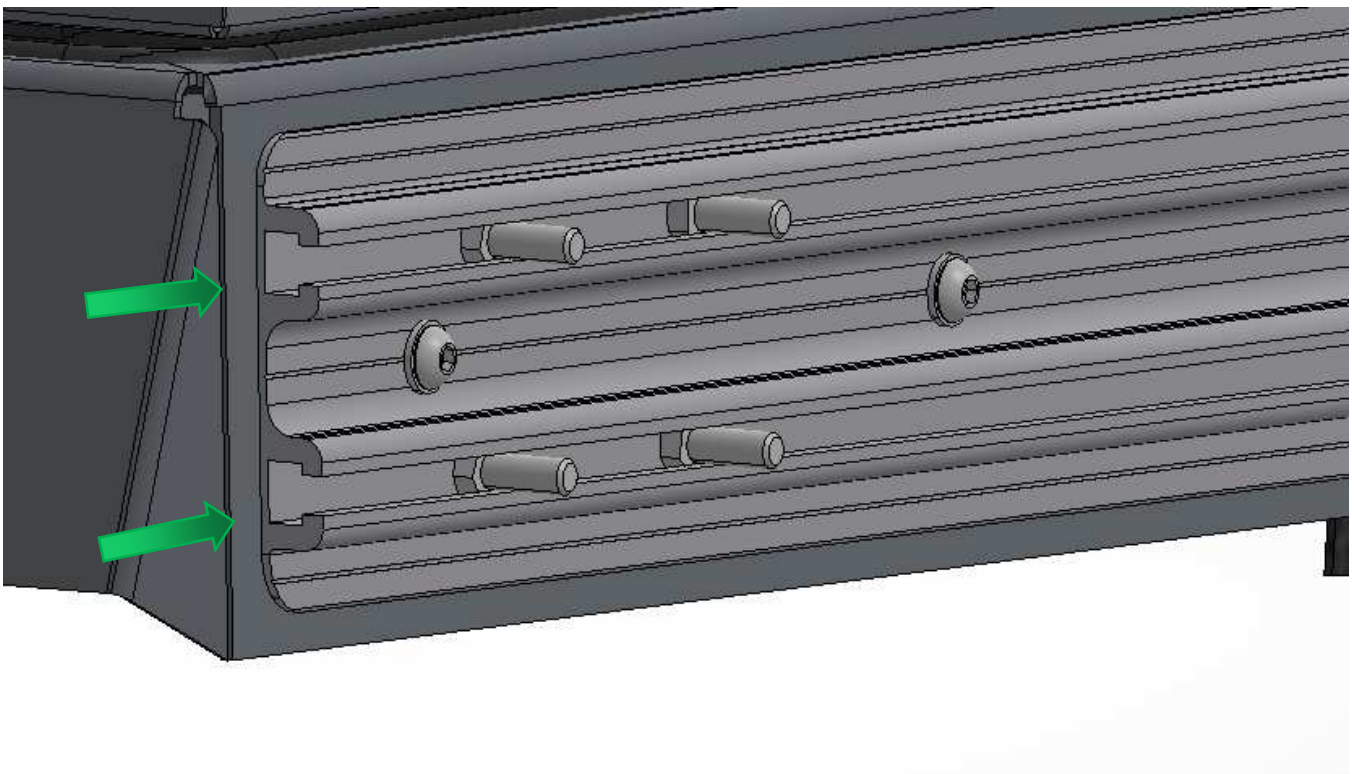
Always wear appropriate PPE ( Personal protection equipment) when fitting this product. Although the mounting kit is designed to be DIY, if you have any doubts or concerns, contact an accredited fitment centre to carry out the work. Alu-Cab will not be liable for any injury to persons, and/or damage to products and/or vehicles.

## STEP 1

Slide the M8x20 hex head bolts into the extrusion slots on the rear side and rear of the roof conversion. 4 bolts on the side and 2 bolts on the rear extrusion.



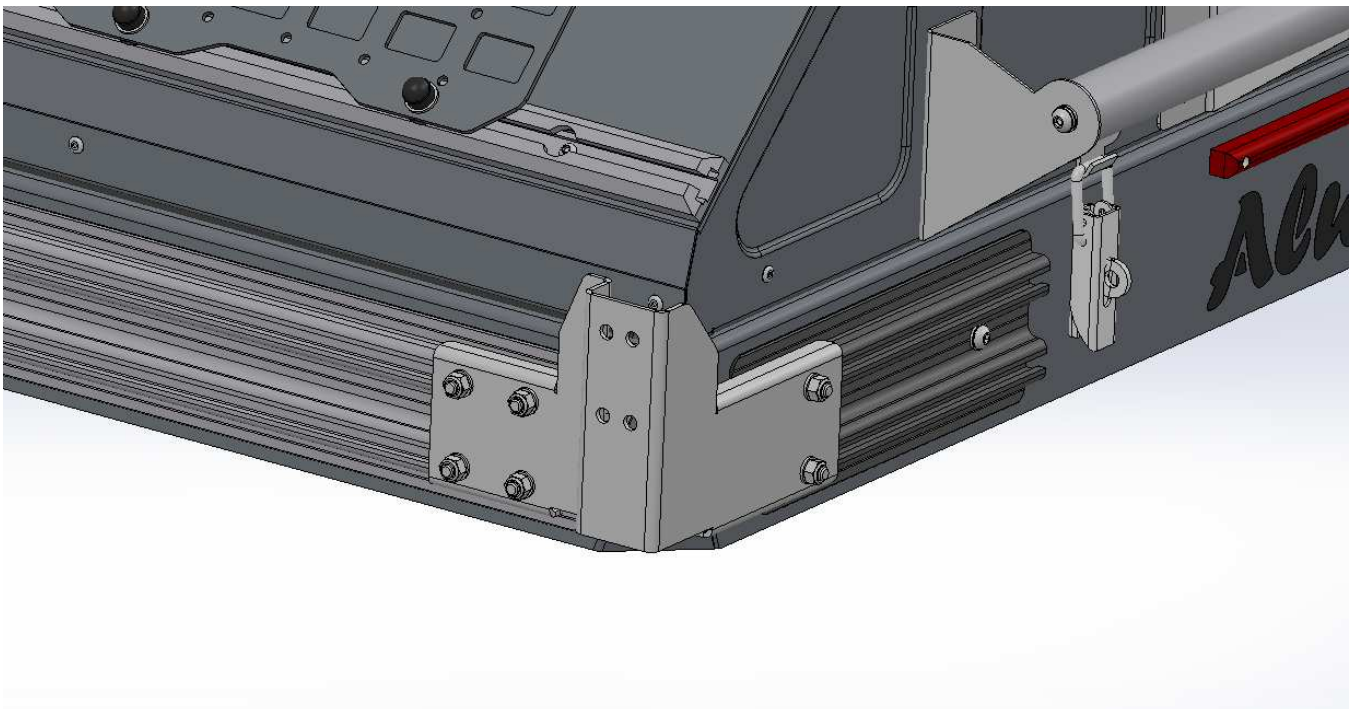
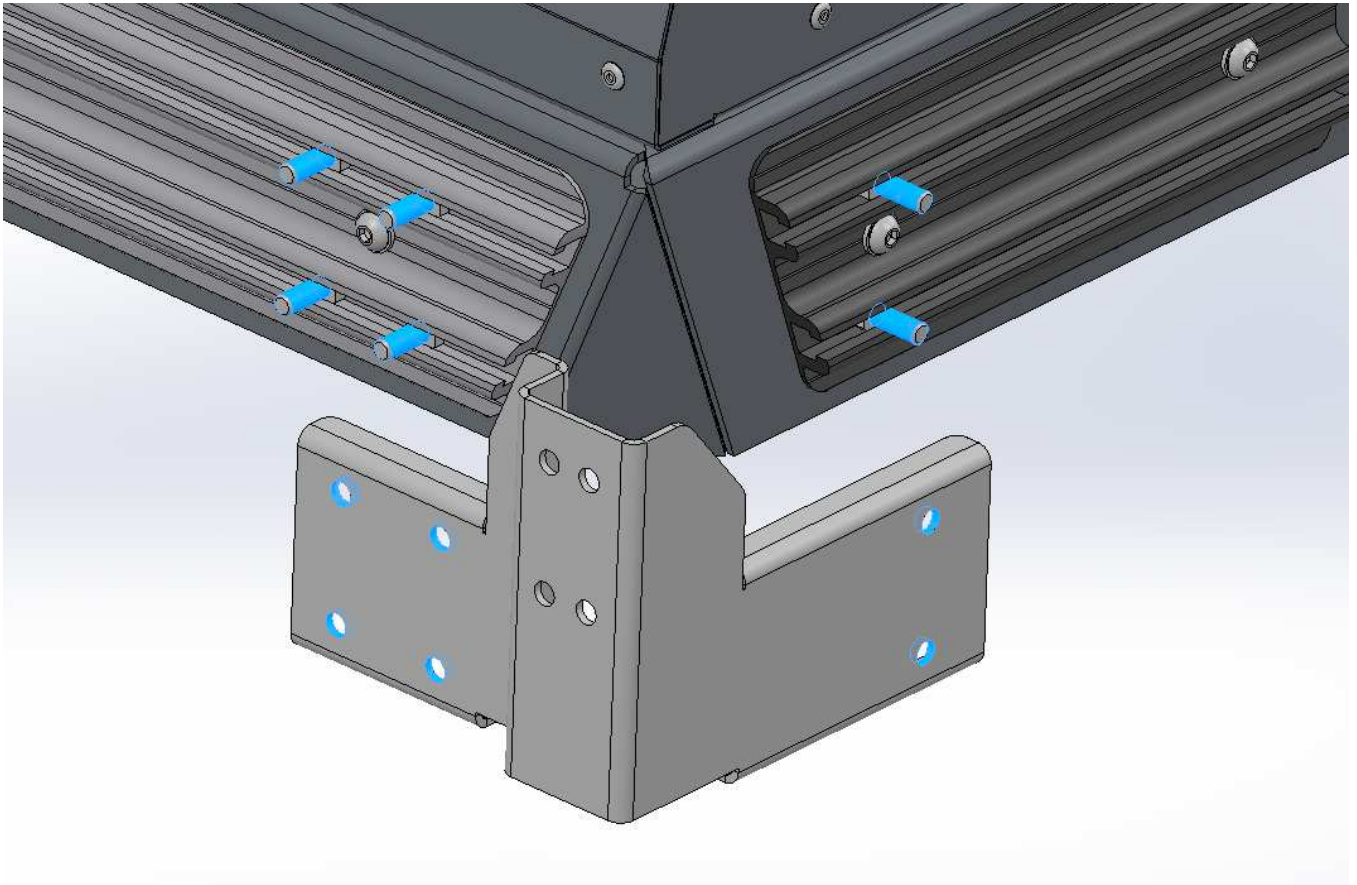
Slide 4 M8x20 hex head bolts into the extrusion slots at the front side end of the roof conversion.



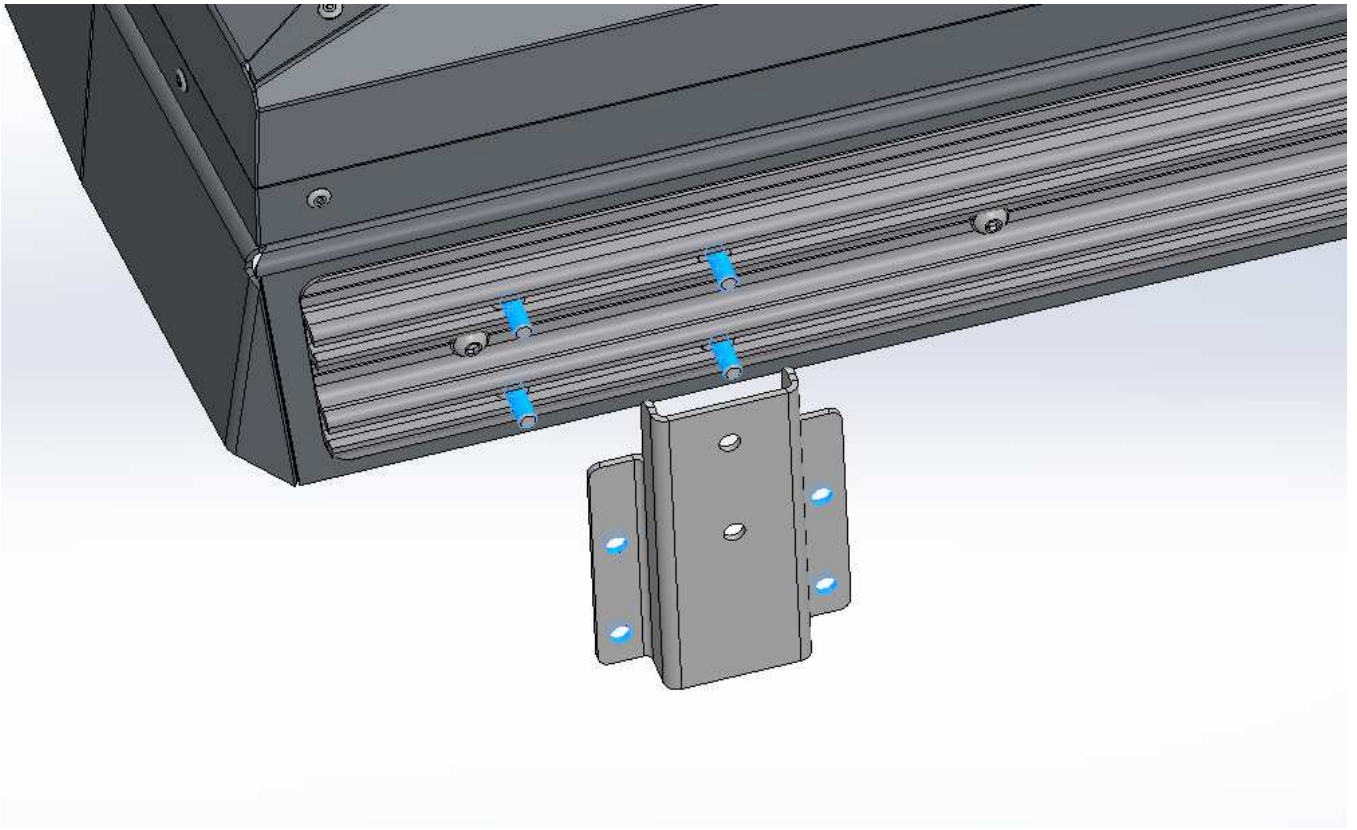


## STEP 2

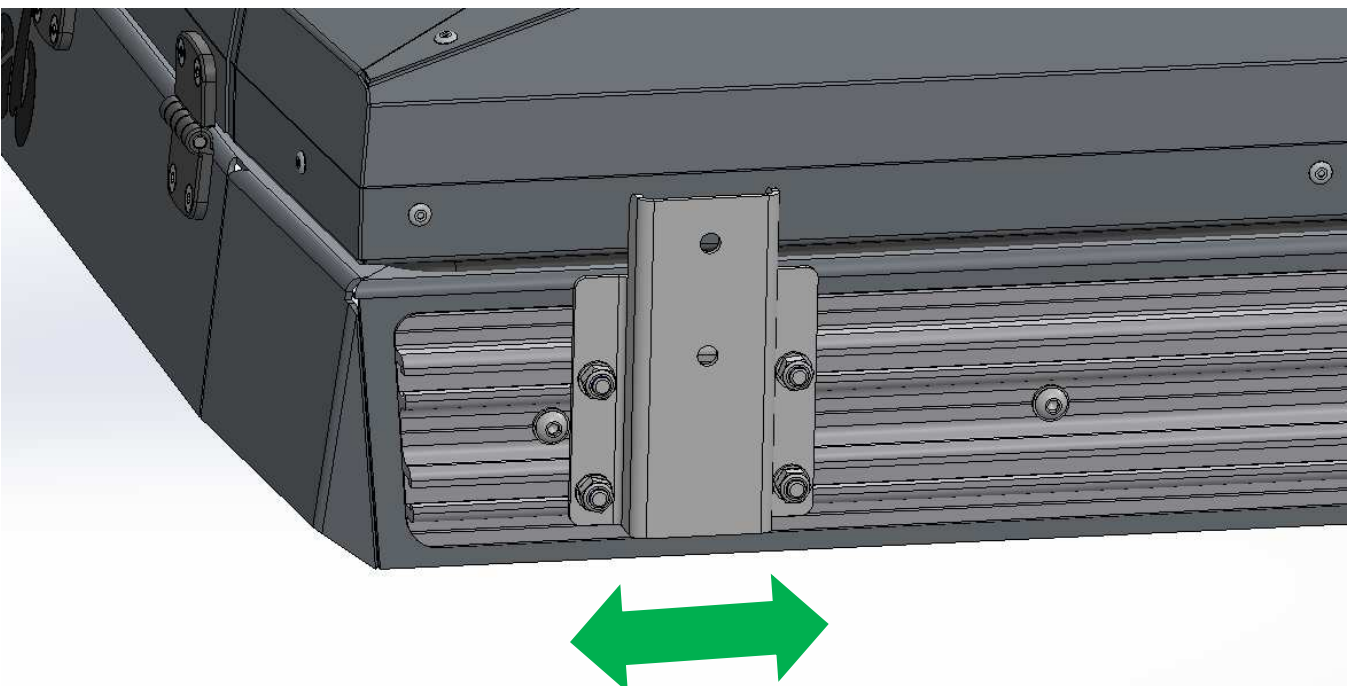
Position the rear bracket over the bolts you placed in the extrusion slots. Fasten the bracket to the extrusion using the supplied nuts and washers.



Position the front bracket over the bolts you placed in the front extrusion slots. Fasten the bracket to the extrusion using the supplied nuts and washers.

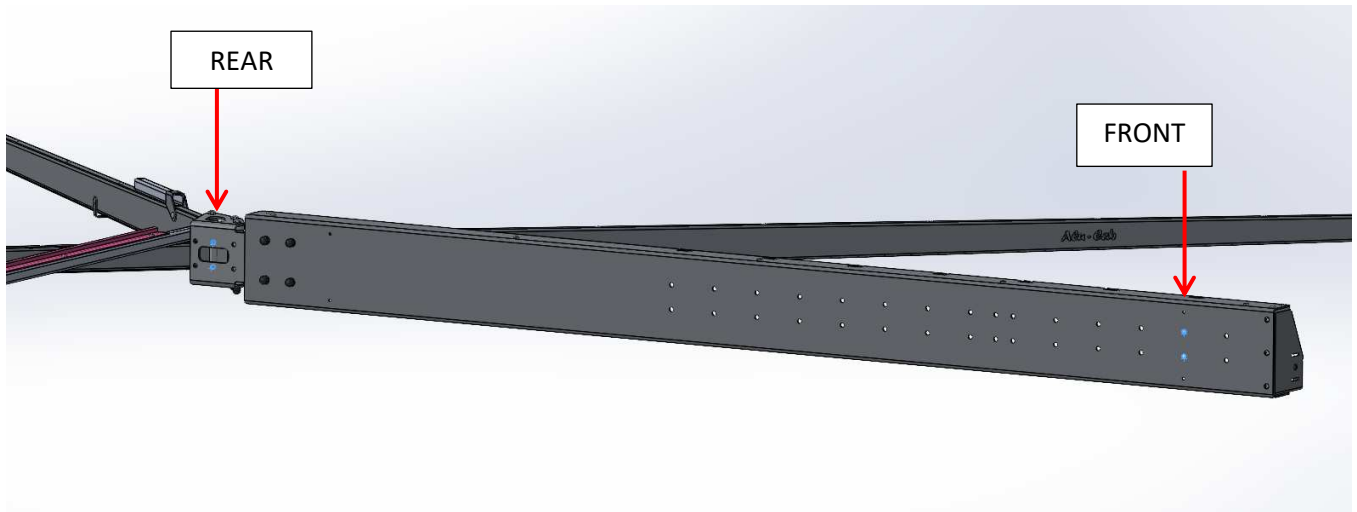


When fastening the front bracket, do not tighten the bolts to fix the bracket in place. Allow for the bracket to be able to shift/slide along the extrusion so the bracket can be aligned with the correct mounting holes on the awning.



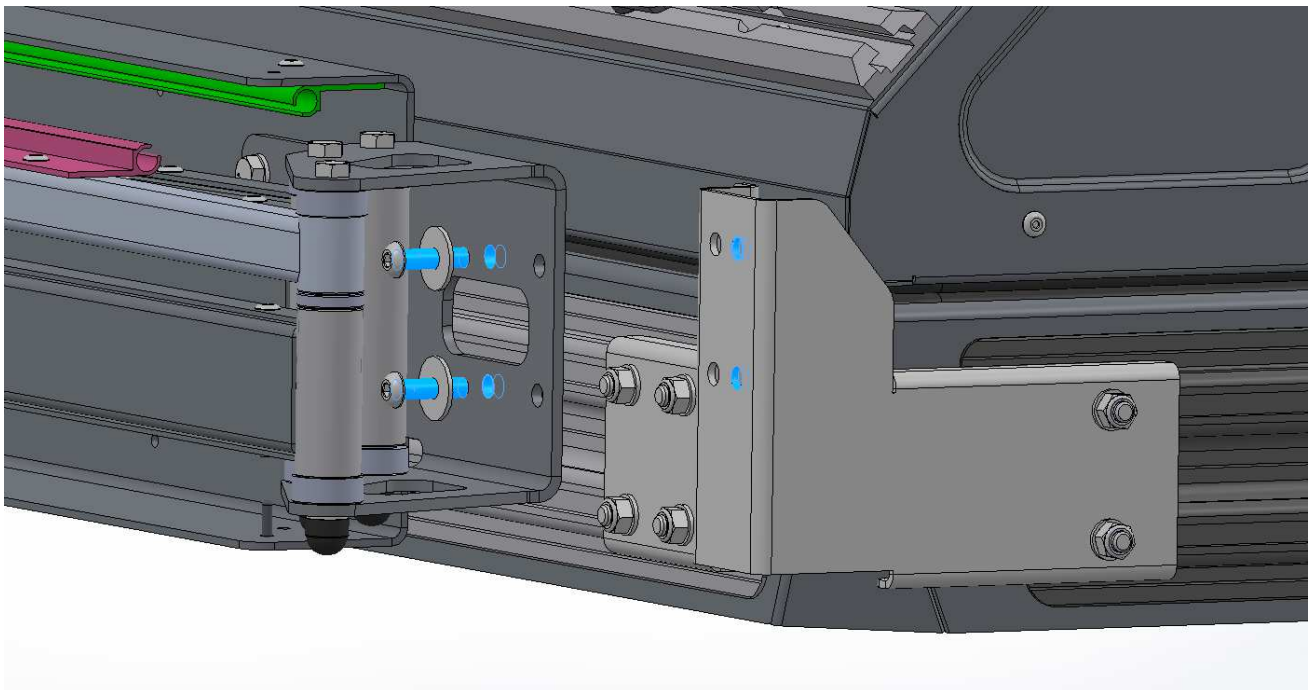
### STEP 3

Drill/pierce the awning bag at the 2nd set of mounting holes from both ends (front and rear of the awning).



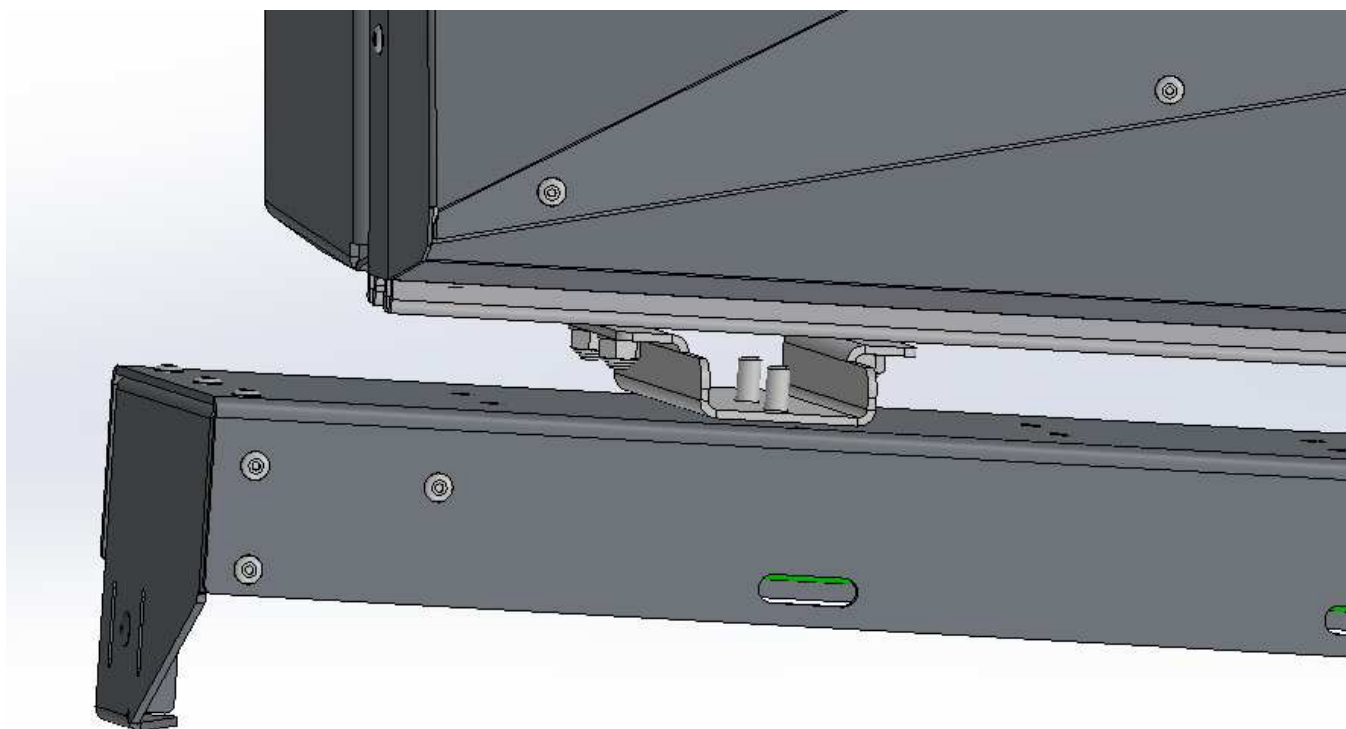
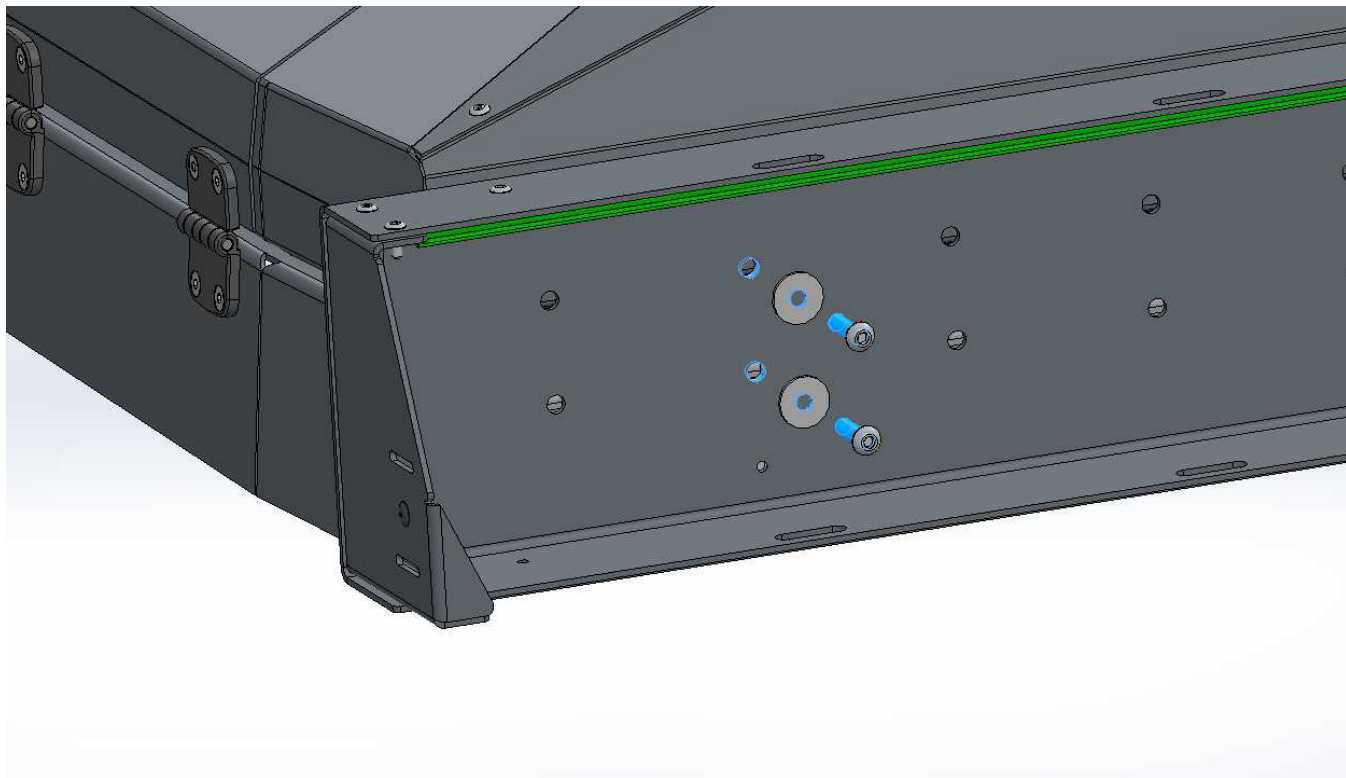
### STEP 4

To align the awning mounting holes, first mount the rear end of the awning to the rear bracket using two button head bolts and oversized washers to keep it in place.



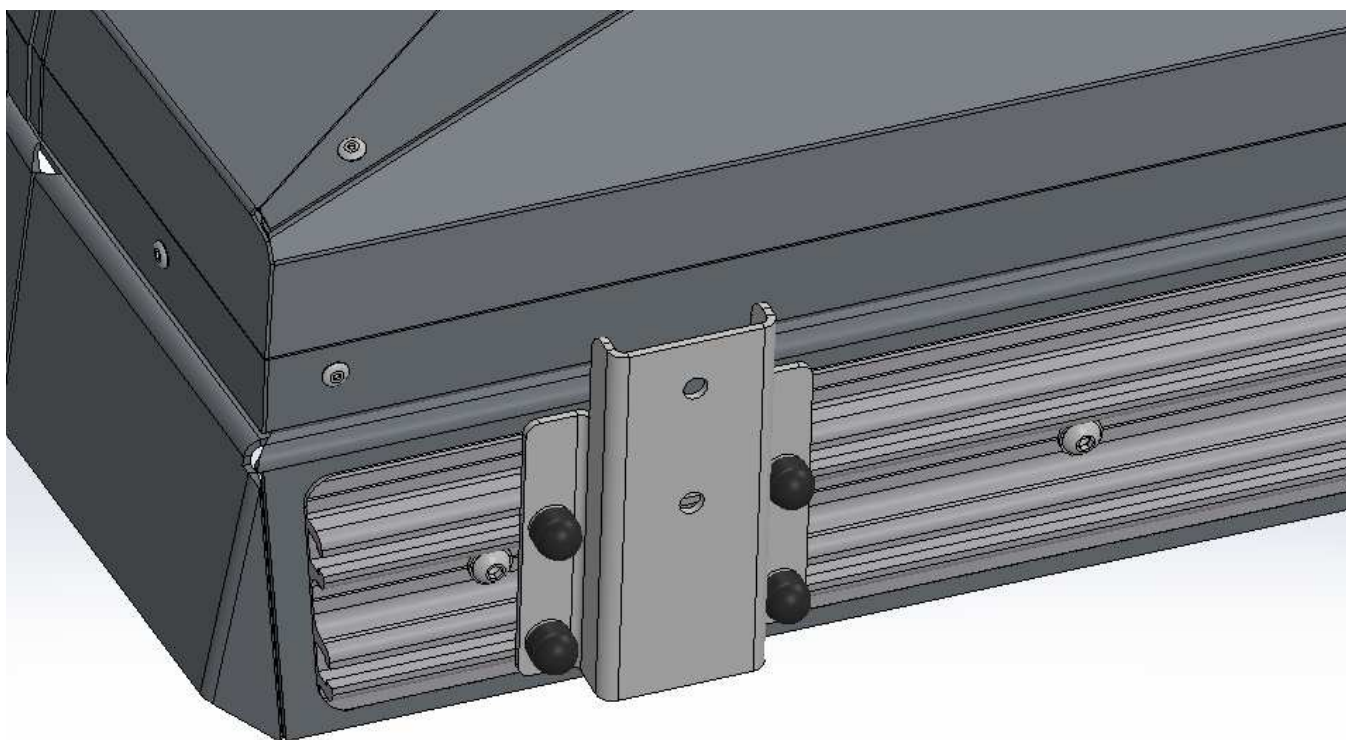
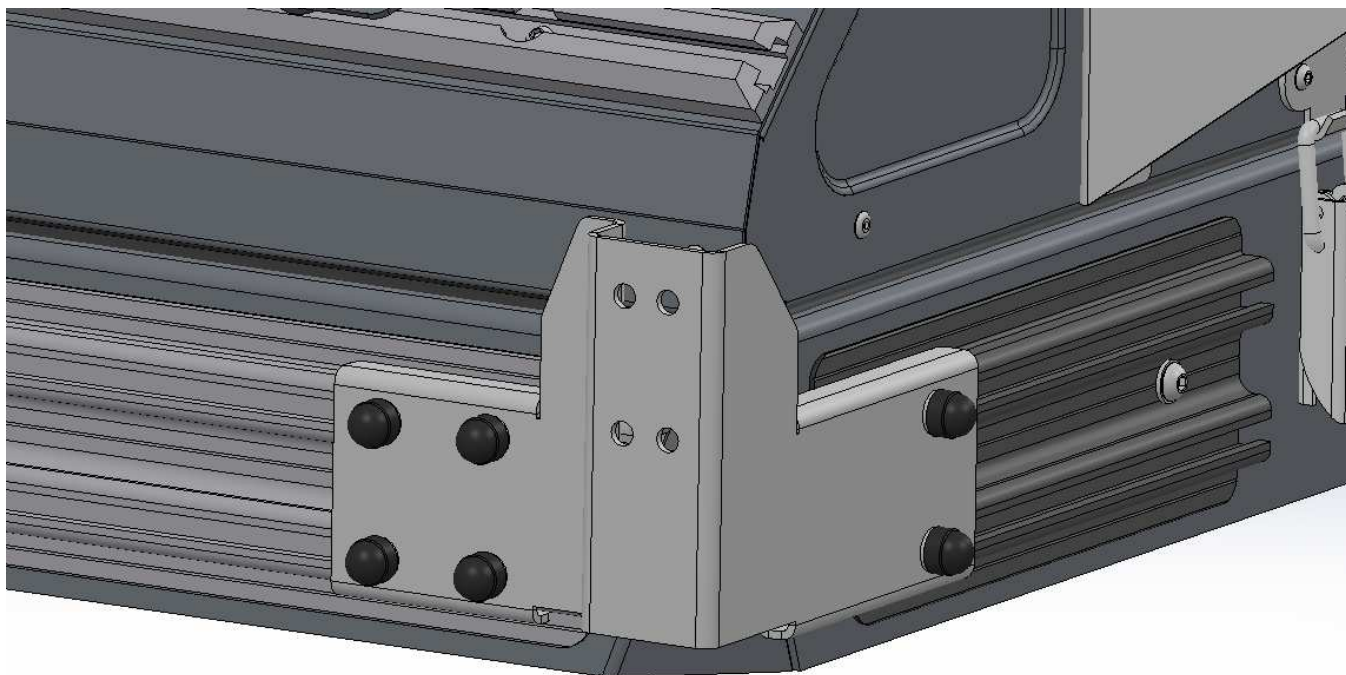


Align the front bracket mounting holes with the 2nd set of mounting holes on the channel of the awning. Insert the two button head bolts to check the for the correct positioning.



## STEP 5

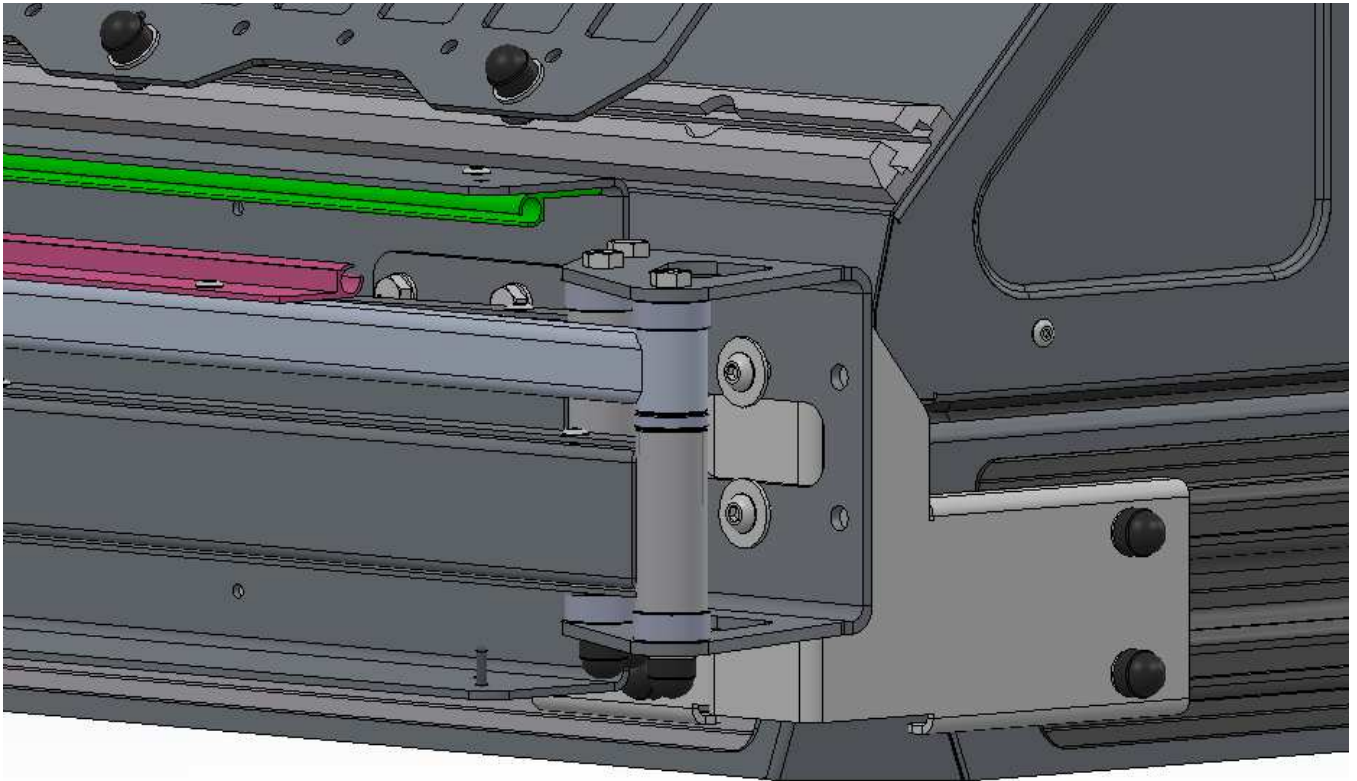
Once the correct positioning for the front bracket is found, remove the awning and tighten the bolts attaching the brackets to the roof conversion and place the black nut-caps on the nuts.



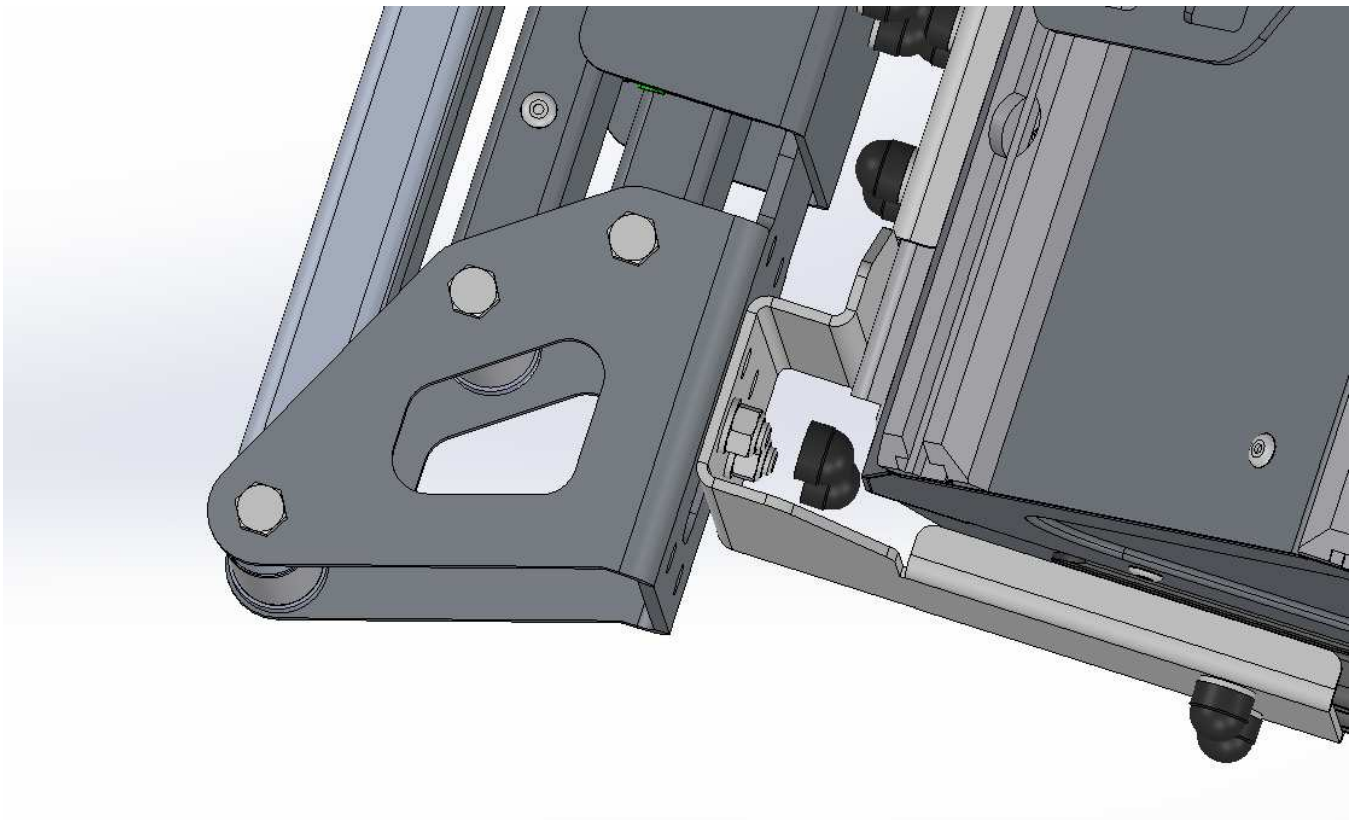


## STEP 6

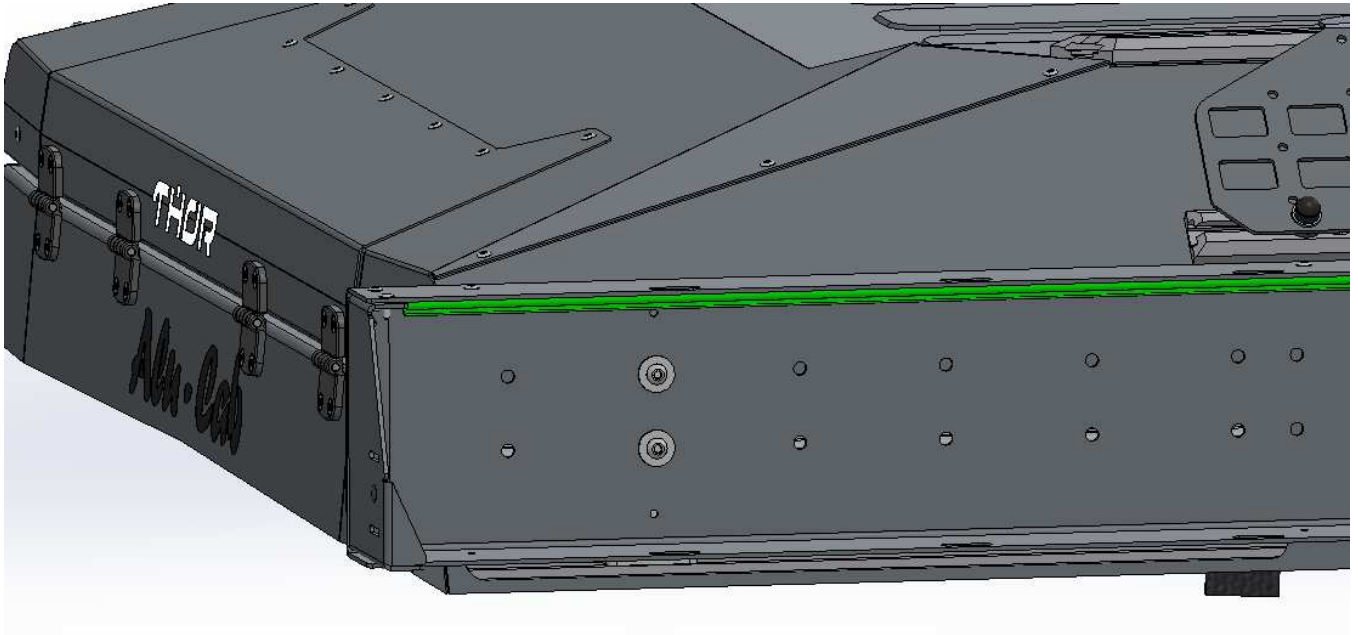
Mount the awning to the brackets, starting from the rear, using the button head bolts and M8 oversized washers.



Place the black nut-caps on the fastened nuts



Fasten the front end of the awning to the front bracket using the remaining fasteners.



Fit the black nut-caps on the nuts at the back of the bracket to complete the fitment of the awning to the roof conversion.

