

FITMENT INSTRUCTIONS

Alu-Cab™



Khaya To DC & XC

All rights reserved. No part of this document may be reproduced, translated, stored in a retrieval system, or transmitted, in any form or by any means, electronic, mechanical, photocopying, recording or otherwise, without prior written permission of the owner.

Review all instructions information carefully before installation.

Any damages, direct or incidental to the installer and/or property due to incorrect installation of any parts are the responsibility of the installer. Due to the various applications and fitment options available, the responsibility lies with the user to ensure all mounting points are secure and tight before every trip. If unsure, consult with your Distributor regarding the operations of our products.

Users are advised to be mindful of the load they are carrying and drive in accordance with road conditions.

DISCLAIMER

Alu-Cab

1. Khaya DC & XC Fitment – Tools, Fasteners & Materials

The tables below show the equipment, i.e. tools and fasteners required to mount the Khaya onto a double cab & extra cab pick-up.

1.1. Tools & Items Required:

TOOLS
Ratchet
Allen key
19mm Socket
19mm Ring Flat Spanner
17mm Socket
17mm Ring Flat Spanner
Drill and 12.5mm drill bit

1.2 Fasteners supplied:

ITEM	QUANTITY
M12 Flat Washer	10 off
M12 Spring Washer	8 off
M12 Eye bolt	2 off
M12 Eye nut	4 off
M12 rigging screw	2 off
M12 Nyloc nut	6 off
M12 nut	2 off
M12x35 Hex Bolt	4 off
M10 D-shackle	8 off

1.3 Hardware Supplied:

ITEM	QUANTITY
Spreader plates	2 off
Towbar plate	1 off
300mm chain	4 off
Rear mounting brackets	2 off



WARNING

Always wear appropriate PPE (Personal protection equipment) when fitting this product. Although the mounting kit is designed to be DIY, if you have any doubts or concerns, contact an accredited fitment centre to carry out the work. Alu-Cab will not be liable for any injury to persons, and/or damage to products and/or vehicles.

2. Front Fitment

There are 2 methods to install the front mounts:

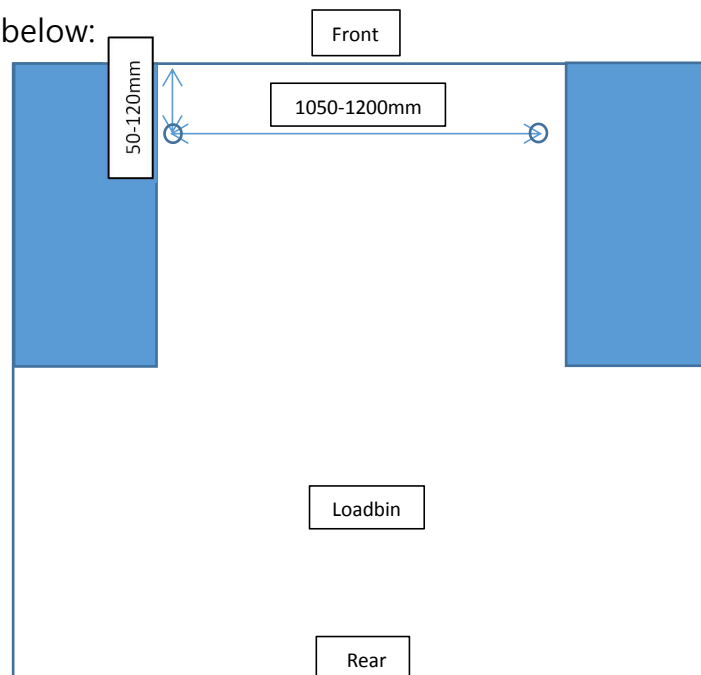
A. Fitting to load body cargo hook points if available

Check vehicle specifications, as these are normally rated for 500kg and higher. If not, do not use these points to mount the Khaya. If the vehicle is to be used for extreme conditions, mount using option B. Fasten the D-shackle, chain and eye bolt assembly to the indicated points, then rest the assembly onto the wheel wells. Remove the tailgate and locks at the rear.

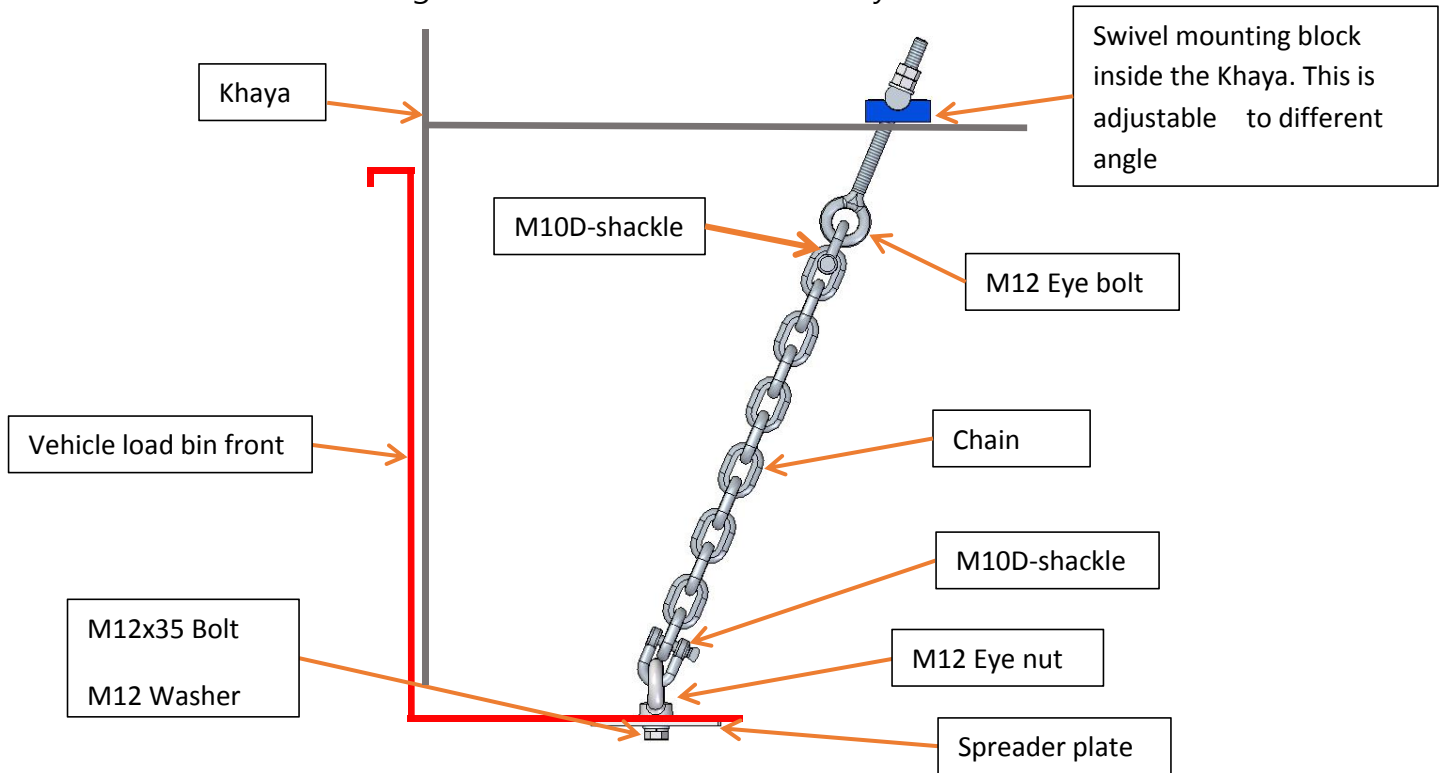


B. Drilling into the load bin

If the vehicle does not have the cargo hooks or the vehicle will be used in extreme conditions, use this method to mount the front of the Khaya. At the front of the load bin, measure and drill a 12.5mm hole as shown below:

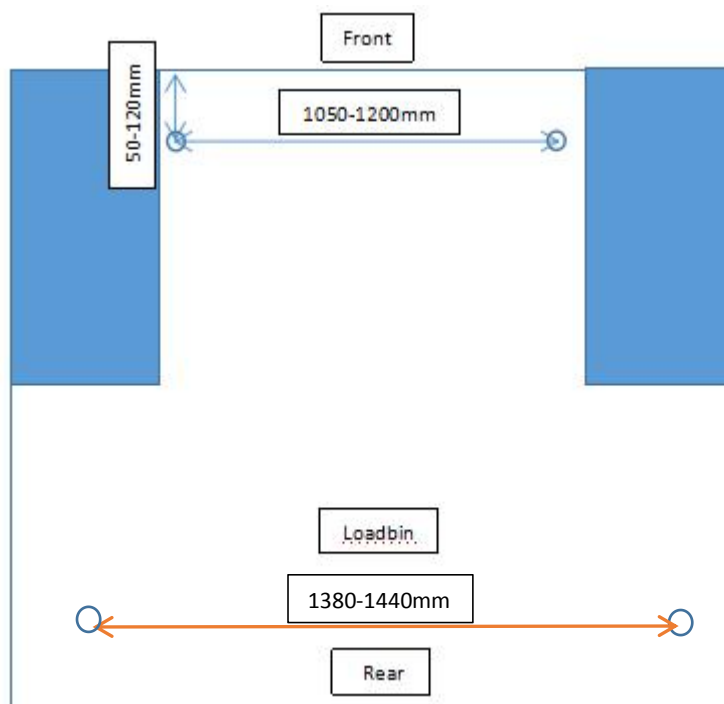


The measurements might vary depending on your load bin, but try to stay within the sizes indicated in the above diagram. Fasten the chain assembly as shown below:



C. Fitting the Khaya to an extra cab

This would be fixed with chains on all four points indicated below

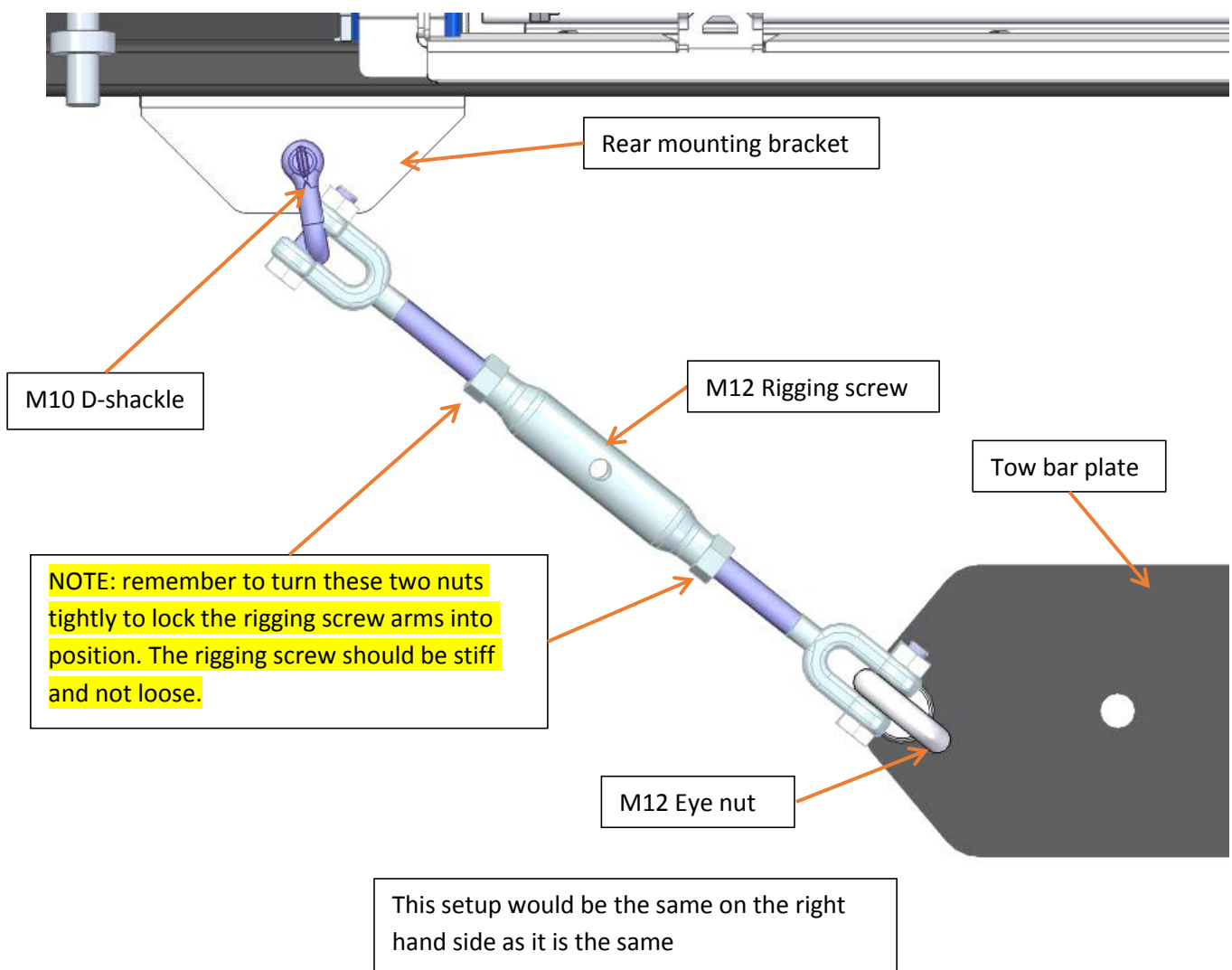


3. Fitting the Khaya

Fit the leg brackets to the Khaya and jack up about 50mm higher than the load bin bottom. Then reverse in your vehicle. Try to align the Khaya central to the bed. Once the Khaya is against the load bin front you can begin to lower it. While the Khaya is on legs you can shift it slightly if not aligned perfectly. Lower the Khaya into place.

4. Rear Fitment

The rear mounting brackets are pre-fitted to the Khaya. Remove the tow bar bolts and fit the tow bar plate supplied. Fit the two eye bolts and fasten with a washer and M12x35 hex bolt supplied. Tie down the camper with the RIGGING SCREW assembly as shown below.



NB: In some cases there may be a metal chain in the rigging screw assembly to accommodate for Length variants.