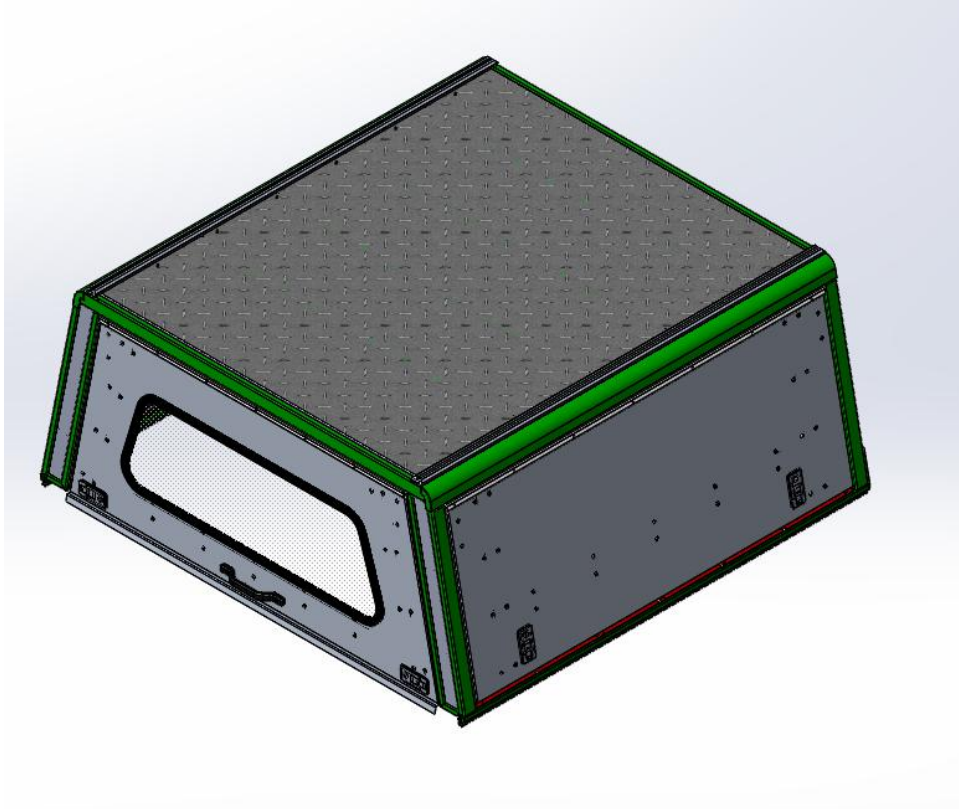


FITMENT INSTRUCTIONS

Alu-Cab™



Canopy to suit Toyota Land Cruiser Fitment Instructions

All rights reserved. No part of this document may be reproduced, translated, stored in a retrieval system, or transmitted, in any form or by any means, electronic, mechanical, photocopying, recording or otherwise, without prior written permission of the owner.

Review all instructions information carefully before installation.

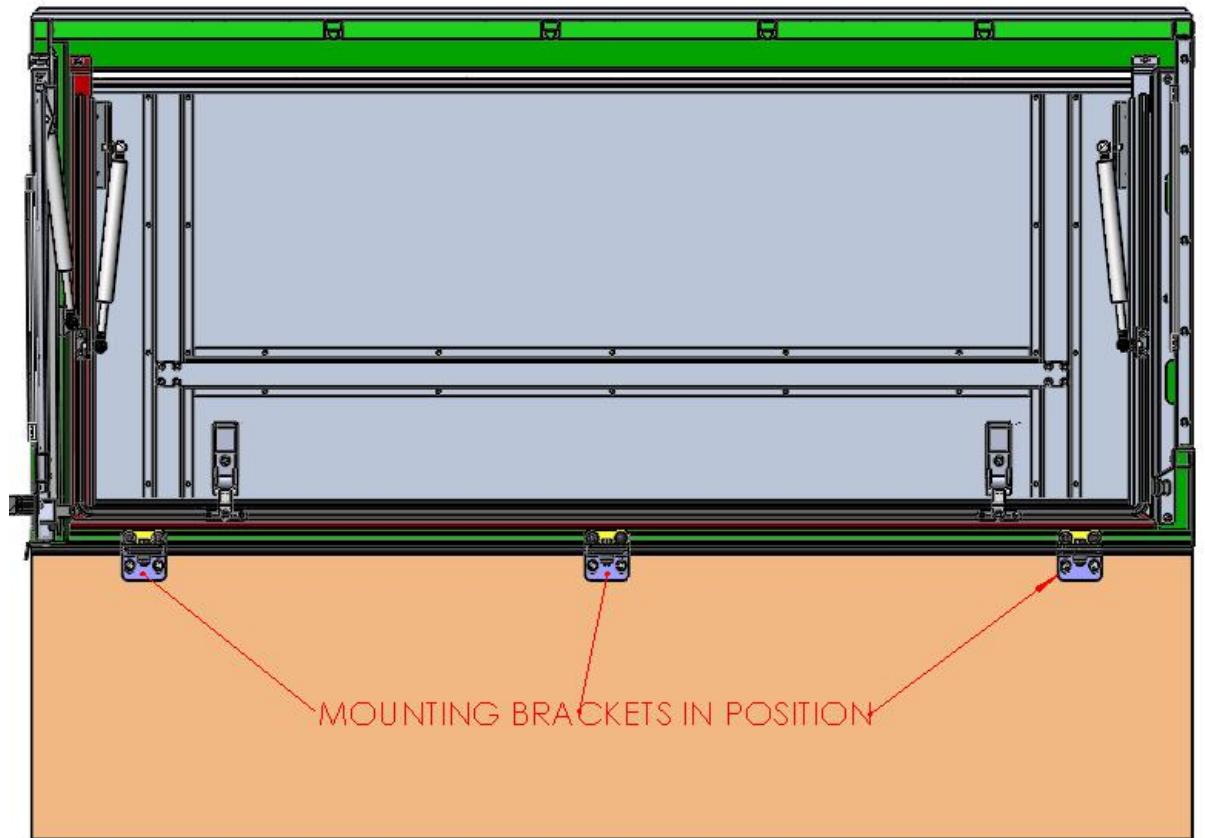
Any damages, direct or incidental to the installer and/or property due to incorrect installation of any parts are the responsibility of the installer. Due to the various applications and fitment options available, the responsibility lies with the user to ensure all mounting points are secure and tight before every trip. If unsure, consult with your Distributor regarding the operations of our products.

Users are advised to be mindful of the load they are carrying and drive in accordance with road conditions.

DISCLAIMER

Alu-Cab

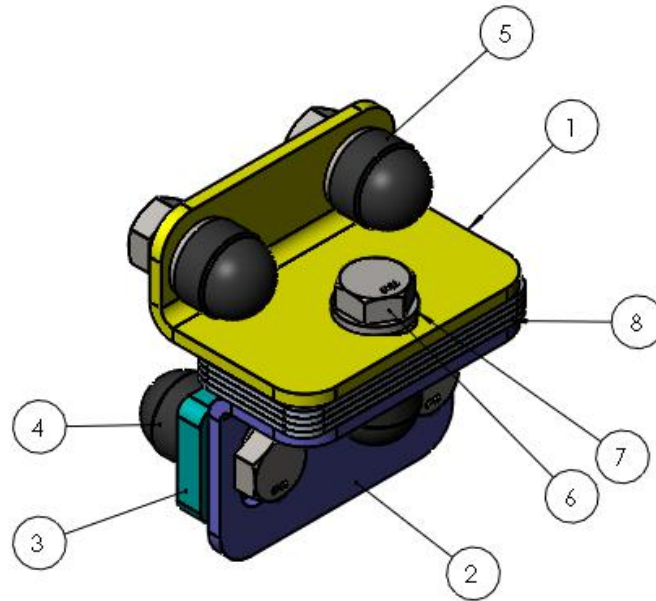
1. Illustration of a cross section of canopy with 3 mounting brackets in position.



WARNING

Always wear appropriate PPE (Personal protection equipment) when fitting this product. Although the mounting kit is designed to be DIY, if you have any doubts or concerns, contact an accredited fitment centre to carry out the work. Alu-Cab will not be liable for any injury to persons, and/or damage to products and/or vehicles.

MOUNTING BRACKET ASSEMBLY:



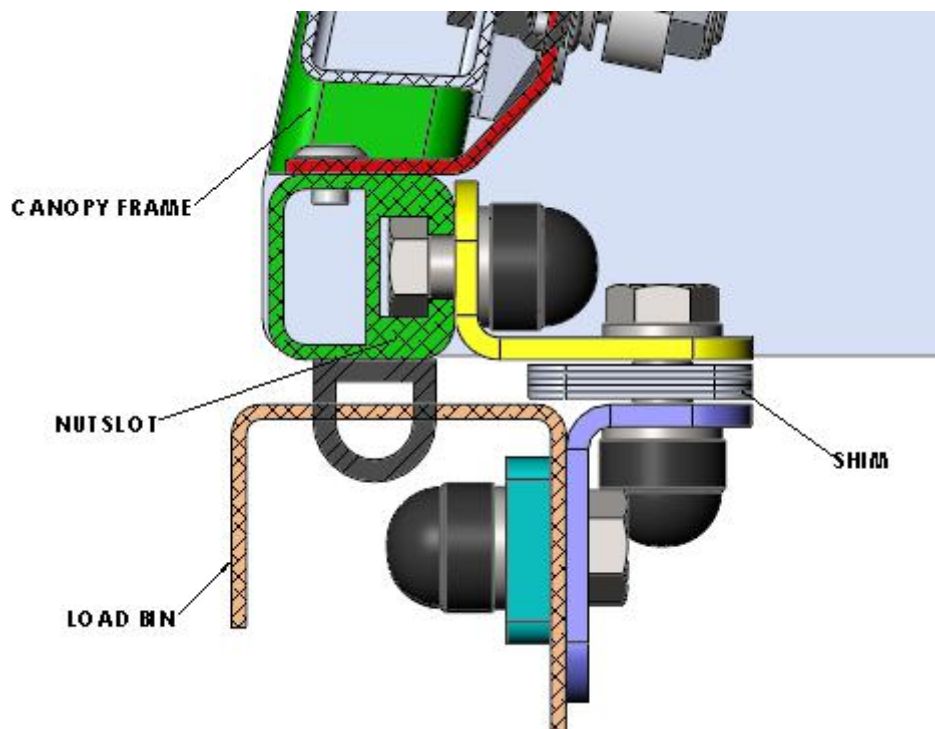
Bill Of Materials below for 1 set of the mounting bracket assembly.

| TOYOTA LAND CRUISER MOUNTING BRACKET ASSEMBLY | | | |
|--|---------------------|-------------------------|-------------|
| ITEM NO. | PART NUMBER | DESCRIPTION | QTY. |
| 1 | 212-MNT-BRKT-01-00 | CANOPY MOUNTING BRACKET | 1 |
| 2 | 212-MNT-BRKT-02-00 | MOUNTING BRACKET 2 | 1 |
| 3 | 212-BCK-PLT-01-00 | MOUNTING BACKING PLATE | 1 |
| 4 | M8 Nut Cap | M8 NUT CAP | 5 |
| 5 | N8 Nyloc Nut | N8 Nyloc Nut | 5 |
| 6 | M8x20 Hex Head Bolt | M8x20 Hex Head Bolt | 5 |
| 7 | M8 Flat Washer | M8 Flat Washer | 6 |
| 8 | TLC SHIM | SHIM | 5 |

NB!

6 sets required for Double and 8 for Single Cab vehicle's.

Illustration showing a cross section of the mounting bracket assembly in position.



1. Bolt on Item 1 to the nut slot extrusion.
2. Position bracket 2 on loadbin and drill 2 x $\text{Ø}9\text{mm}$ holes through.
3. Bolt on Item 2 using Item 3 with backing plate for support.
4. Insert the required amount of shims to take up the gap between brackets when tightening.