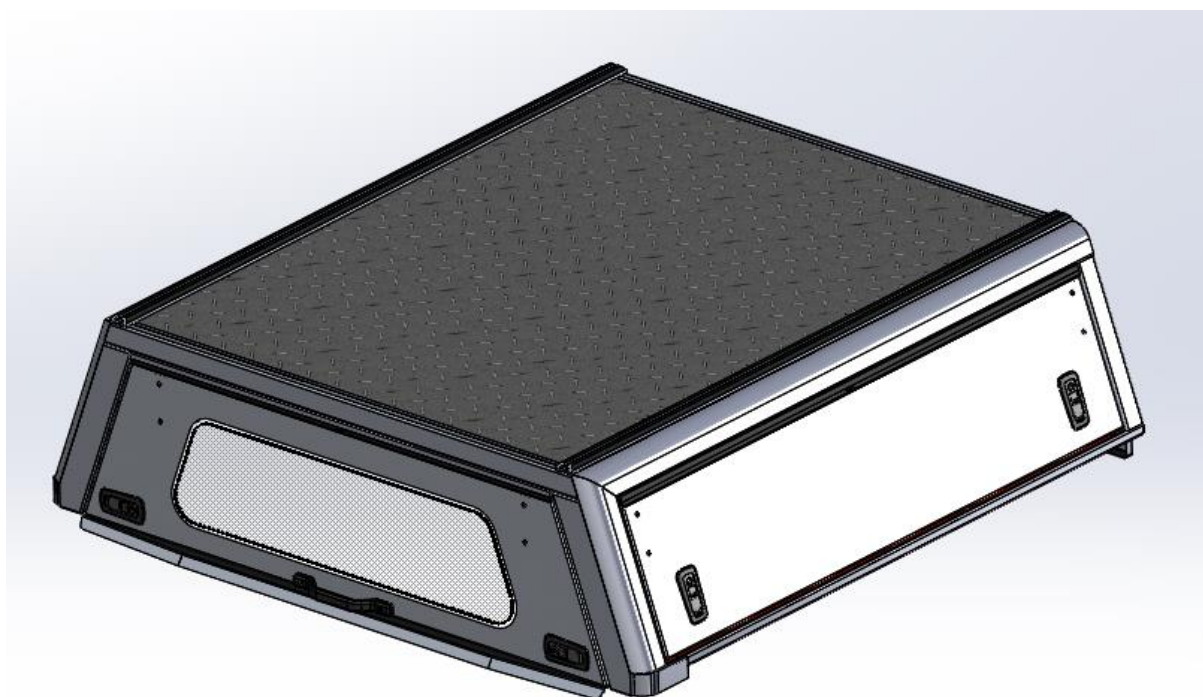


# FITMENT INSTRUCTIONS

**Alu-Cab™**



## Mitsubishi Triton L200

All rights reserved. No part of this document may be reproduced, translated, stored in a retrieval system, or transmitted, in any form or by any means, electronic, mechanical, photocopying, recording or otherwise, without prior written permission of the owner.

Review all instructions information carefully before installation.

Any damages, direct or incidental to the installer and/or property due to incorrect installation of any parts are the responsibility of the installer. Due to the various applications and fitment options available, the responsibility lies with the user to ensure all mounting points are secure and tight before every trip. If unsure, consult with your Distributor regarding the operations of our products.

Users are advised to be mindful of the load they are carrying and drive in accordance with road conditions.

DISCLAIMER

**Alu-Cab**

## 1. Canopy Fitment – Tools, Fasteners & Materials

The tables below show the equipment, i.e. tools and fasteners required to start the canopy fitment for a Mitsubishi Triton L200 Canopy.

### 1.1. Tools Required:

<u>TOOLS</u>
<ul style="list-style-type: none"><li>• Ratchet</li></ul>
<ul style="list-style-type: none"><li>• Hand Drill</li></ul>
<ul style="list-style-type: none"><li>• 13mm Socket</li></ul>
<ul style="list-style-type: none"><li>• 13mm Ring Flat Spanner</li></ul>

### 1.2. Fasteners required: (Included with canopy)

<u>ITEM</u>	<u>QUANTITY</u>
<ul style="list-style-type: none"><li>• M8x30mm Hex Bolts</li></ul>	4 off
<ul style="list-style-type: none"><li>• M8x20mm Hex Bolts</li></ul>	12 off
<ul style="list-style-type: none"><li>• M8x40mm Hex Head Bolts</li></ul>	10 off
<ul style="list-style-type: none"><li>• M8 Flat Washer</li></ul>	24 off
<ul style="list-style-type: none"><li>• M8 Nyloc Nuts</li></ul>	18 off
<ul style="list-style-type: none"><li>• M8 Plastic Nut Caps</li></ul>	18 off



#### **WARNING**

Always wear appropriate PPE ( Personal protection equipment) when fitting this product. Although the mounting kit is designed to be DIY, if you have any doubts or concerns, contact an accredited fitment centre to carry out the work. Alu-Cab will not be liable for any injury to persons, and/or damage to products and/or vehicles.

**1.3. Hardware Required:** (Included with canopy)

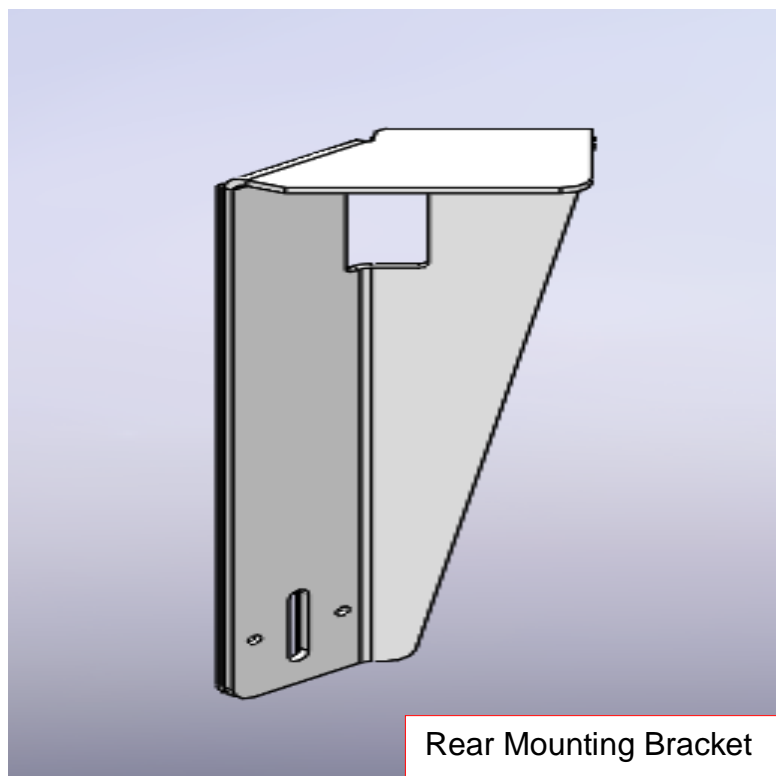
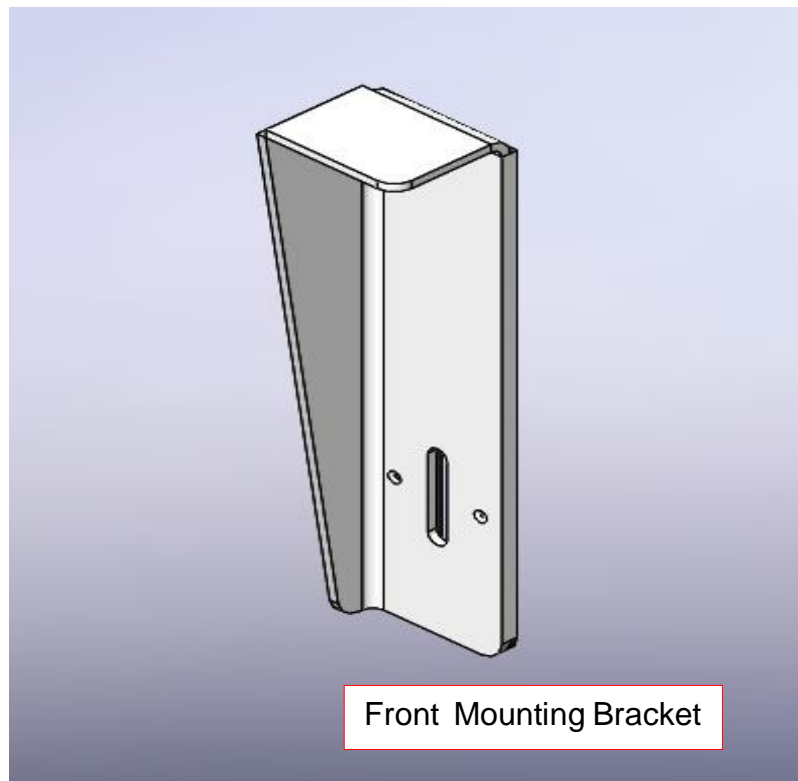
<b><u>ITEM</u></b>	<b><u>QUANTITY</u></b>
• Left Front Support Brackets	1 off
• Right Front Support Bracket	1 off
• Left Rear Support Bracket	1 off
• Right Rear Support Bracket	1 off
• Universal Bracket	4 off
• Centre Mounting Brackets	2 off
• Bracket Spacers	32 off

**1.4. Consumables Required:**

<b><u>ITEM</u></b>
• Turpentine
• Cloth
• Black sealant, silicone or Sikaflex
• Window Cleaner
• Loctite

## 2. Front and Rear Canopy Support Brackets.

In Figure 1 and Figure 2 below are the canopy support brackets for the Mitsubishi Triton L200.

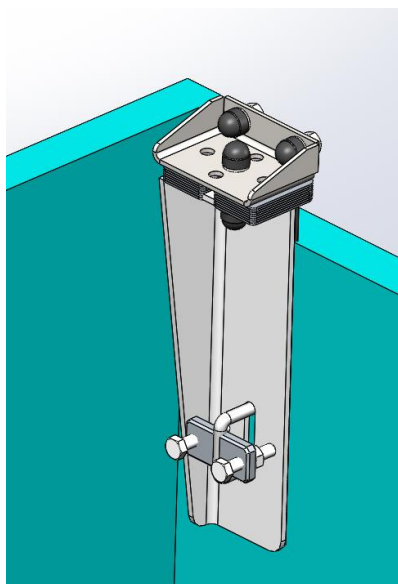


The picture below illustrating the 2 mounting points. As well as the corresponding 2 (Not Shown).

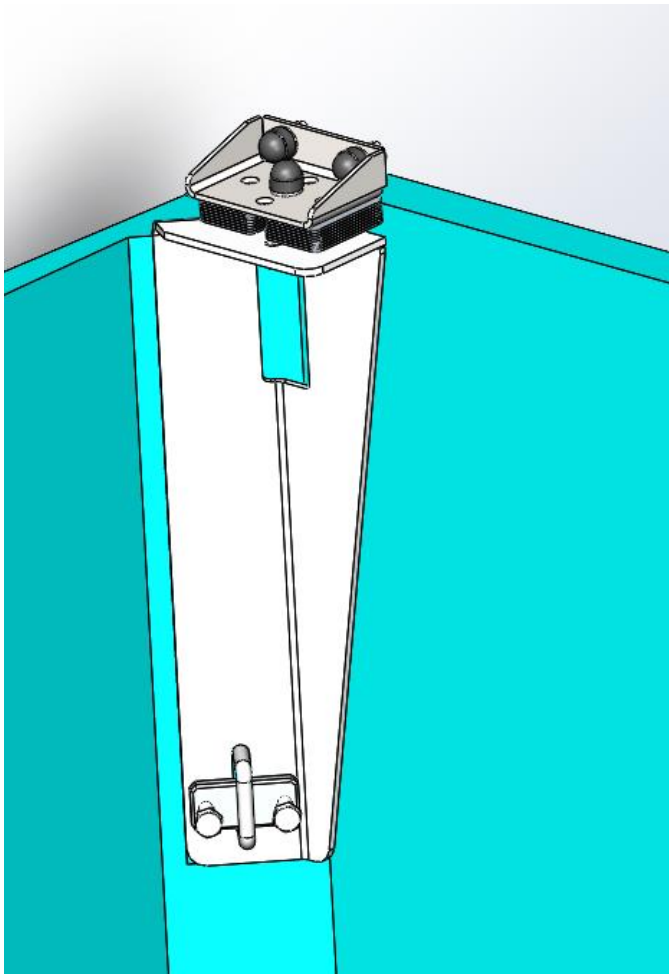


### **Mounting the Support Brackets to the Load Bin**

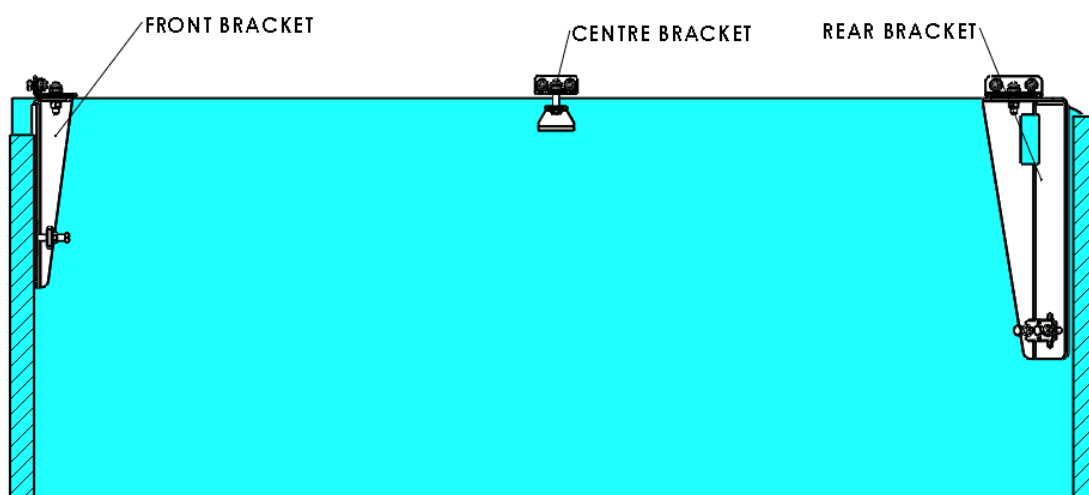
Picture below showing the front mounting bracket in position.



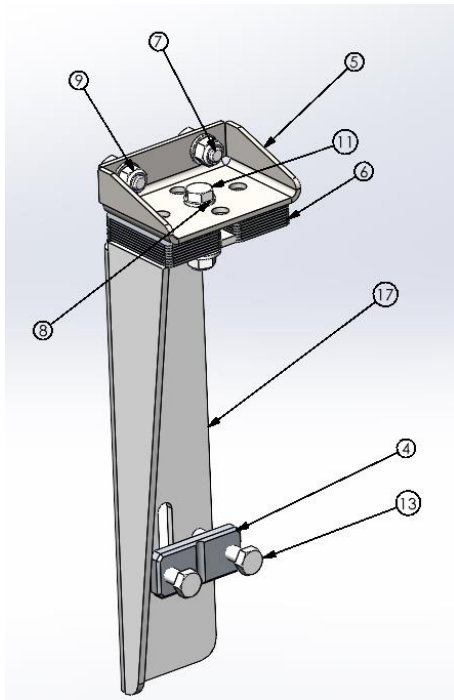
Picture below showing the rear mounting bracket in position.



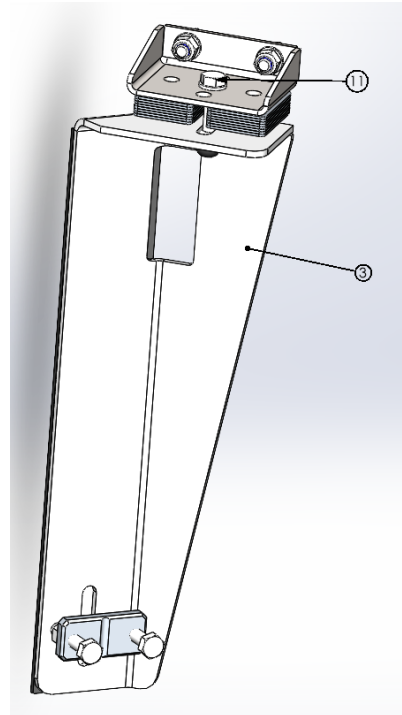
Cross section showing Front, Rear and Centre mounting brackets in position.



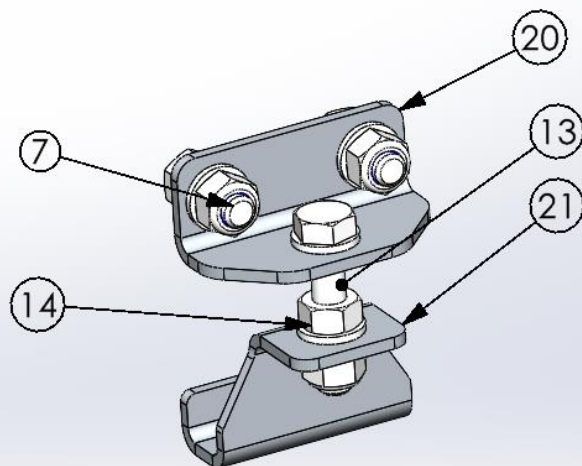
# FRONT BRACKET



# REAR BRACKET

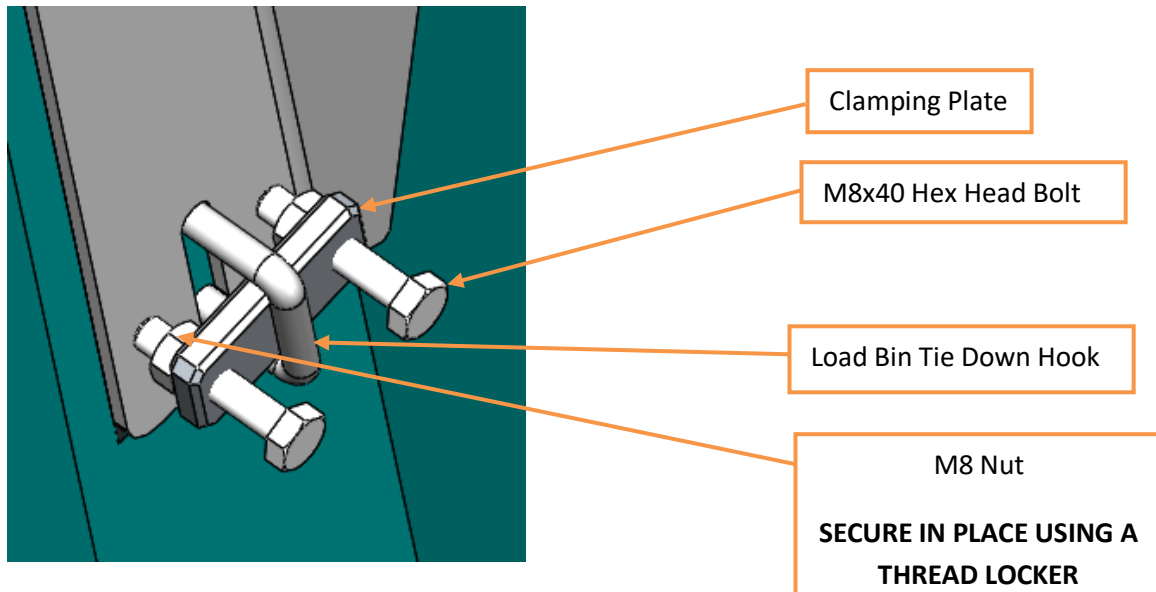


# CENTRE BRACKET



## **NB: Fitment of the Clamp Plate**

The correct fitment of the clamp plate is vital for securing the canopy.



Ensure that you mount the bracket as shown in the image above. The nut must be placed on the loadbin side of the clamping plate and used to force the clamping plate into the tie down hooks. Secure the nut in place using thread locker.

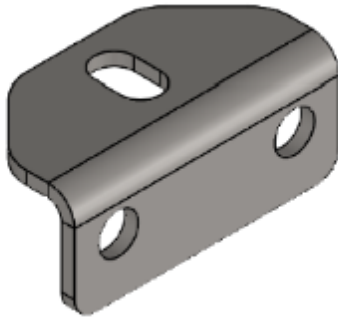
### **BILL OF MATERIALS FOR MOUNTING KIT:**

ITEM NO.	PART NUMBER	DESCRIPTION	QTY
1	202-CLMP-PLT-01	CLAMP PLATE	4
2	203-FNT-MNT-LH-01	FRONT MOUNTING BRACKET LH	1
3	203-FNT-MNT-RH-01	FRONT MOUNTING BRACKET RH	1
4	203-RER-MNT-LH-01	REAR MOUNTING BRACKET LH	1
5	203-RER-MNT-RH-01	REAR MOUNT BRACKET RH	1
6	AC001-CAN-MNT-BRKT-01	CANOPY MOUNTING BRACKET	4
7	AC001-STD-SHIM-01	STANDARD SHIM 01	32
8	CMB-000-001	CENTRE TOP MOUNT BRACKET	2
9	CMB-000-002	BOTTOM MOUNT BRACKET	2
10	FFW-M8	M8x20mm OVERSIZED WASHER S/S - DIN 9021	4
11	FW-M8	M8x16mm FLAT WASHER S/S - DIN 125	22
12	HEX-M8x20	M8x20 HEX BOLT S/S	12
13	HEX-M8x30	M8x30 HEX BOLT S/S	4
14	HEX-M8x40	M8x40 HEX BOLT S/S	10
15	NCAP-M8	NUT CAP-08mm	24
16	NUT-M8	M8 HEX NUT S/S	10
17	NY-M8	M8 NYLOC NUT S/S	18
18	SPNG-RUB-320 - 250mm	SPONGE RUBBER - 3X20mm (10m p/roll)	4
19	SPNG-RUB-320 - 344mm	SPONGE RUBBER - 3X20mm (10m p/roll)	4

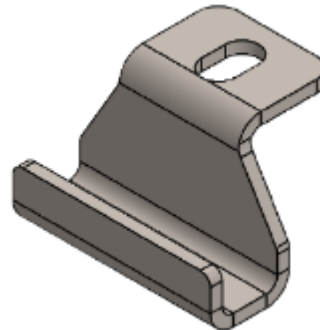


### 3. Centre Mounting Brackets

The centre mounting bracket consists of two brackets shown in the Figures below.



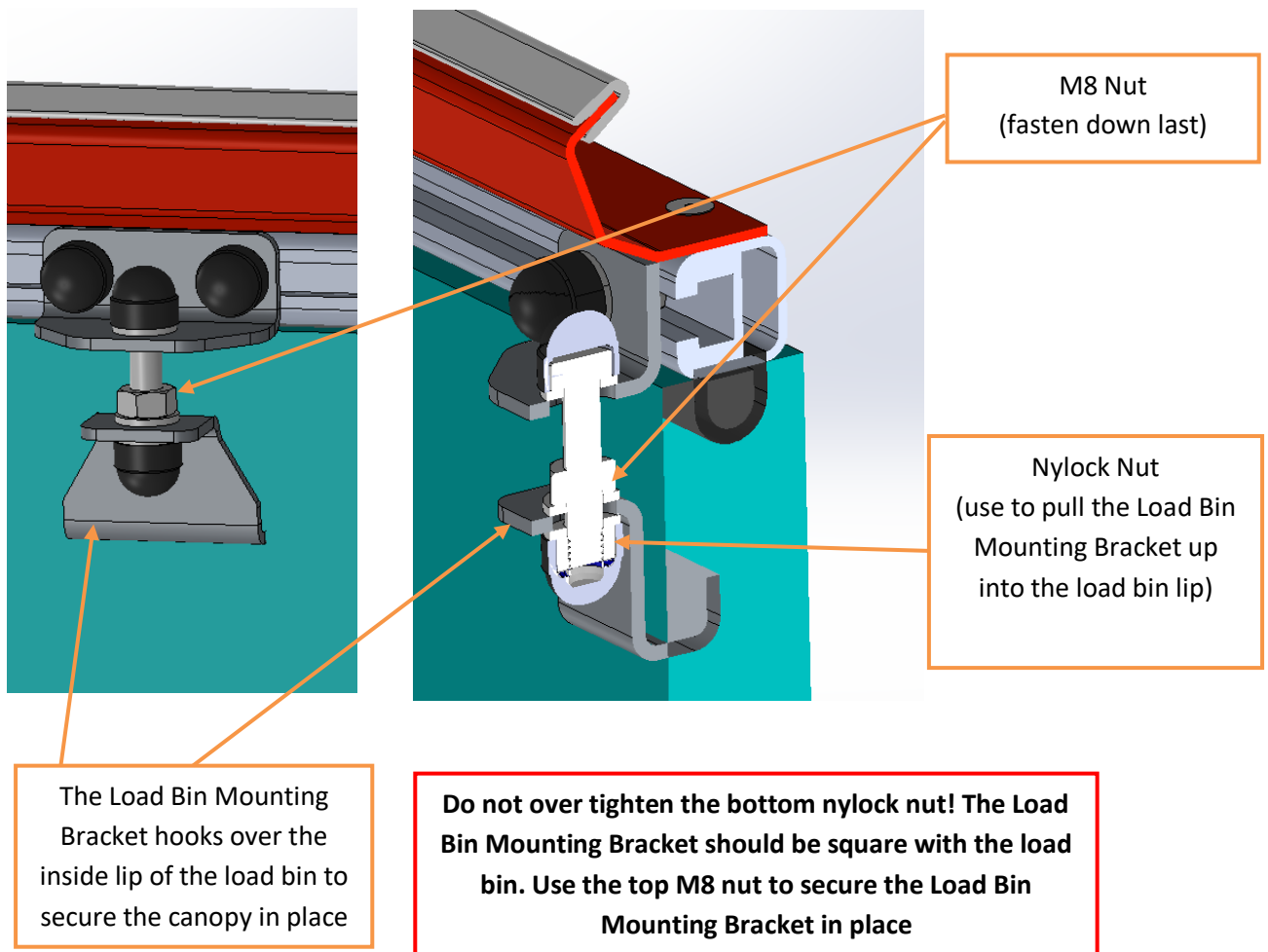
Canopy Mounting Bracket



Load Bin Mounting Bracket

#### 3.1. Mounting the Centre Mounting Bracket

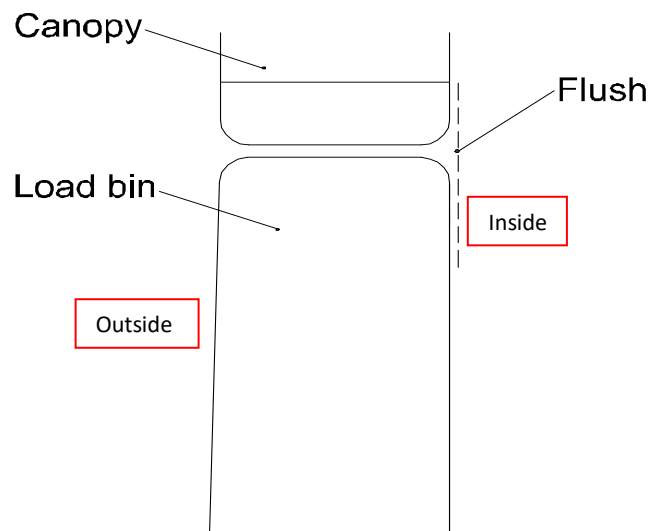
The figure below shows a section view of how the centre mounting bracket clamps onto the load bin.



## **Canopy Installation**

Before placing the canopy onto the load bin, check that the D-Rubber is intact on the canopy. If this is not done, the canopy and/or load bin could be damaged or can cause leaks into the canopy.

To position the canopy, ensure that it is flush with the load bin on the inside.



Canopy and Load Bin Alignment